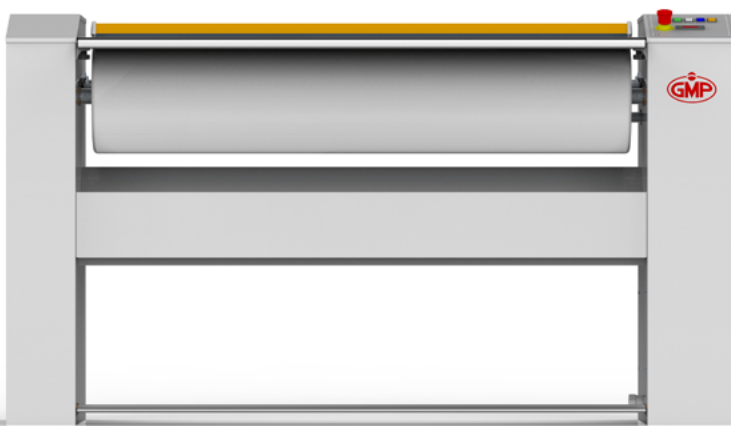




WE KNOW-HOW

discover the wrinkle free experience



GMP.30



GMP.25

GMPline



GMP.25

**STRONG
RELIABLE
SIMPLE**



Chromed Chest.



Reduced Utilities Costs

The electronic temperature control system, matched with a newly designed heat distribution system, have drastically cut the electric consumption of GMP line.

Chromed Steel Chest

Chromed steel has proven to be the best possible choice for ironing: it ensures an excellent resistance to friction and an extreme longevity.

Work Comfortably with Automatic Chest Movement

Work comfortably with GMP line! With just a light pressure on the foot pedal you can start or stop the roller rotation, as well as open or close the chest to better feed your linen. Chest movement and roller rotation are controlled by an electric motor.

Practical Foot Pedal

Stops the roller rotation and leaves your hands free to accommodate the linen in the feeding process.

Electronic Temperature Control

The best and most accurate temperature control system available. Temperature can be freely adjusted by 1°C to perfectly suit the fabric type processed. Microprocessor control available as option.

User Friendly Control Panel

Large, simple and extremely easy to understand.

Aluminium Feeding Table

Feeding your linen has become simpler thanks to the purposely shaped feeding profile. Aluminium surface can be easily cleaned and will grant the hygiene of your laundry. Feeding basin available as option.

Low-Cost Maintenance

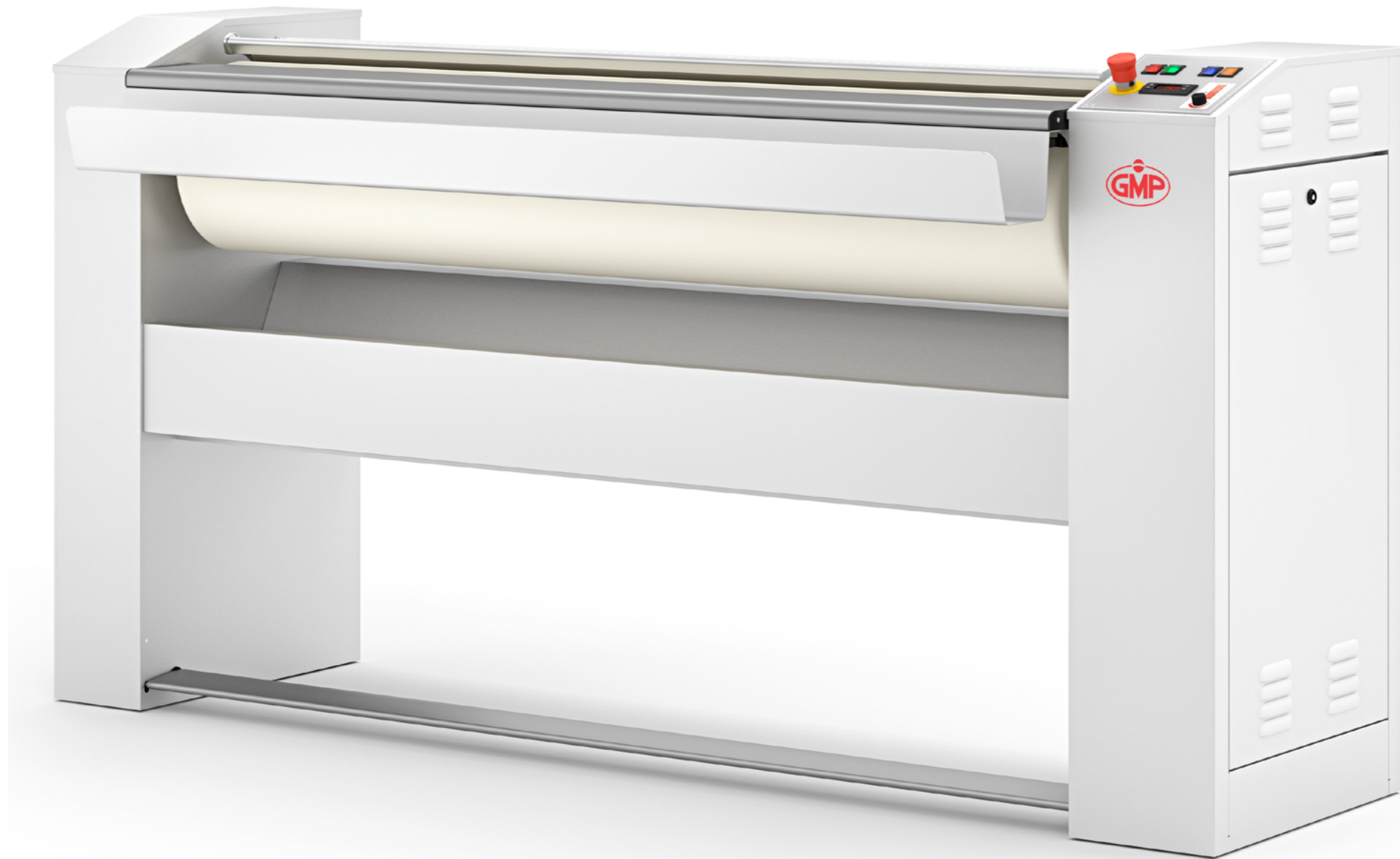
Simple and reliable construction, matched with the small number of components, will grant the lowest maintenance costs.

GMP.30

**STRONG
PERFORMING
RELIABLE
SIMPLE**



Chromed Chest.



Reduced Utilities Costs

The electronic temperature control system, matched with a newly designed heat distribution system, have drastically cut the electric consumption of GMP line.

Chromed Steel Chest

Chromed steel has proven to be the best possible choice for ironing: it ensures an excellent resistance to friction and an extreme longevity.

Work Comfortably with Automatic Chest Movement

Work comfortably with GMP line! With just a light pressure on the foot pedal you can start or stop the roller rotation, as well as open or close the chest to better feed your linen. Chest movement and roller rotation are controlled by an electric motor.

Practical Foot Pedal

Stops the roller rotation and leaves your hands free to accommodate the linen in the feeding process.

Electronic Temperature Control

The best and most accurate temperature control system available, with 2 probes controlling the whole ironing width. Temperature can be freely adjusted by 1°C to perfectly suit the fabric type processed. Microprocessor control available as option.

User Friendly Control Panel

Large, simple and extremely easy to understand.

Aluminium Feeding Table

Feeding your linen has become simpler thanks to the purposely shaped feeding profile. Aluminium surface can be easily cleaned and will grant the hygiene of your laundry. Feeding basin available as option.

Low-Cost Maintenance

Simple and reliable construction, matched with the small number of components, will grant the lowest maintenance costs.

OPTIONS

INVESTING ON THE ROLLER PADDING: TENAX



TENAX is a stainless steel padding that replaces the standard roller padding made of steelwool. Purposely studied and dimensioned by GMP for its products, TENAX lasts for the entire life of the ironer and opposite to the steelwool does not require any maintenance.

In a medium-term perspective, TENAX should rather be considered as an investment with immediate return than as a pure cost.

- Entirely realized in **100% stainless steel**, TENAX is not subject to deformations: its strong structure remains unaltered in time, guaranteeing identical productivity and perfect contact surface along the whole ironer life.
- Definitely **eliminates concerns about roller shrinking**, wrinkles, insufficient drying and service cost.
- Grants the **maximum efficiency of the steam extraction**: thanks to its perforated structure, it allows easy and quick removal of humidity from the ironing surface.
- **Increases production capacity**: linen can be introduced with higher residual moisture content.
- Medium lifespan of the Nomex cover felt: 4000+ hours.

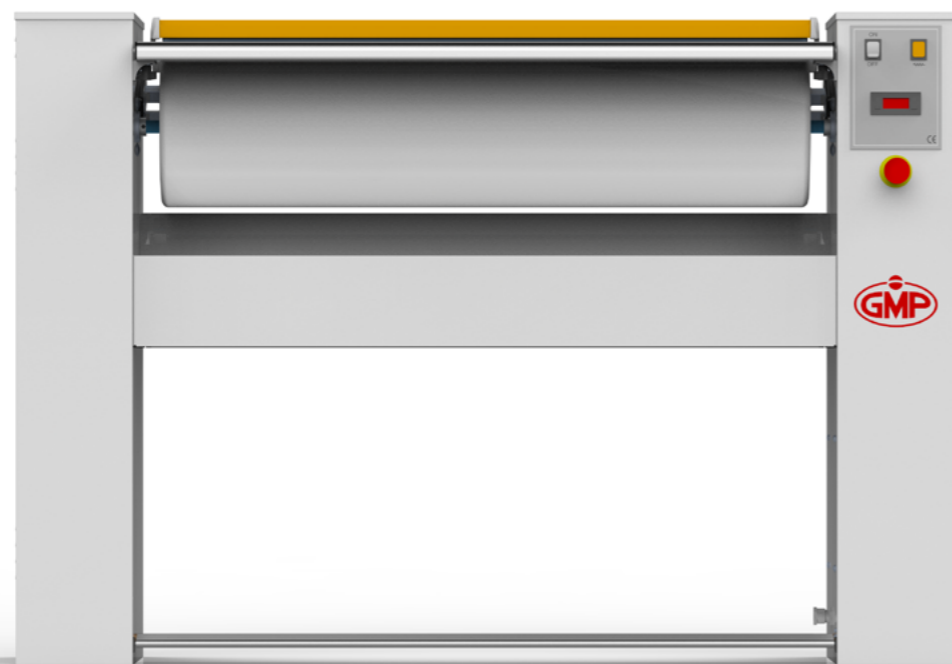


GMP line

HOW TO CHOOSE THE RIGHT MODEL? THE RIGHT MODEL CHOICE IS THE FIRST STEP TO IMPROVE YOUR LAUNDRY'S EFFICIENCY

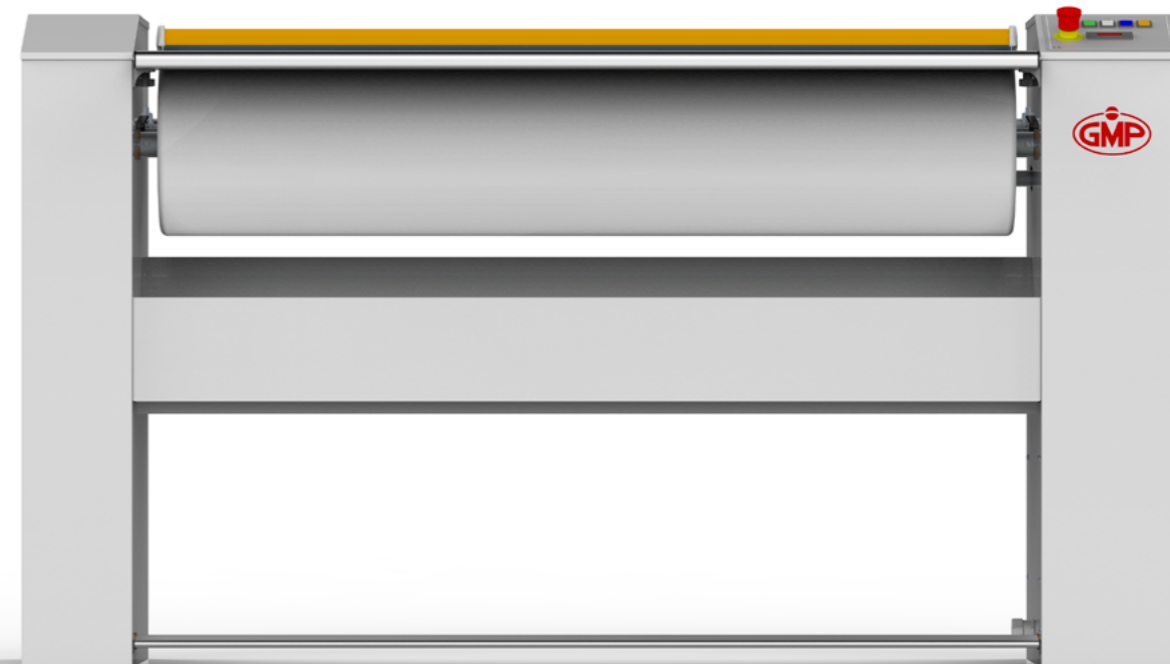
First of all, measure the largest linen you wish to iron: consider that to obtain the best quality finish and speed up the ironing process you should ideally not exceed two layers.

	GMP 100.25	GMP 120.25	GMP 1400ES	GMP 140.30	GMP 160.30	GMP 200.30
Recommended maximum linen width	200 cm	240 cm	280 cm	280 cm	320 cm	400 cm

GMP.25**TECHNICAL DATA**

	GMP 100.25	GMP 120.25	GMP 1400ES
Roller dimensions	1000 x Ø250 mm	1200 x Ø250 mm	1400 x Ø250 mm
Supply tension *	V.400/3N/50-60Hz	V.400/3N/50-60Hz	V.400/3N/50-60Hz
Heating power	6 kW	6,9 kW	7,5 kW
Motor(s)	0,18 kW	0,18 kW	0,18 kW
Absorption (Amps)	V.400/3: 10,5	V.400/3: 12	V.400/3: 13
Ironing speed	3,8 m/min	3,8 m/min	3,8 m/min
Ironing speed, variable	option 1 ÷ 5 m/min	option 1 ÷ 5 m/min	option 1 ÷ 5 m/min
Steam extraction	n/a	n/a	option Ø70 mm, 30 m³/h
Feeding basin	option	option	option
Hourly production (recommended moisture)	25 kg (15-20%)	30 kg (15-20%)	35 kg (15-20%)
Ironer dimensions (wxdxh)	1440x420x1003 mm	1640x420x1003 mm	1840x420x1003 mm
Packing dimensions, crated (wxdxh)	1690x590x1250 mm	1890x590x1250 mm	2090x590x1250 mm
Weight, gross/net	94 / 130 kg	100 / 136 kg	106 / 146 kg

* DIFFERENT VOLTAGES THAN INDICATED AVAILABLE ON OPTION,
PLEASE CONTACT OUR SALES OFFICES

GMP.30**TECHNICAL DATA**

	GMP 140.30	GMP 160.30	GMP 200.30
Roller dimensions	1400 x Ø300 mm	1600 x Ø300 mm	2000 x Ø300 mm
Supply tension *	V.400/3N/50Hz	V.400/3N/50Hz	V.400/3N/50Hz
Heating power	9,9 kW	11,4 kW	15 kW
Motor(s)	0,53 kW	0,53 kW	0,71 kW
Absorption (Amps)	V.400/3: 19	V.400/3: 21	V.400/3: 26
Ironing speed	2,7 - 4,3 m/min	2,7 - 4,3 m/min	2,7 - 4,3 m/min
Ironing speed, variable	option 1 ÷ 5 m/min	option 1 ÷ 5 m/min	option 1 ÷ 5 m/min
Steam extraction	option Ø75 mm, 90 m³/h	option Ø75 mm, 90 m³/h	option Ø75 mm, 90 m³/h
Feeding basin	option	option	option
Hourly production (recommended moisture)	40 kg (25%)	50 kg (25%)	60 kg (25%)
Ironer dimensions (wxdxh)	1890x552x1073 mm	2090x552x1073 mm	2490x552x1073 mm
Packing dimensions, crated (wxdxh)	2134x690 x1300 mm	2340 x 690 x 1300 mm	2740 x730x1400 mm
Weight, gross/net	253 / 209 kg	268 / 221 kg	296 / 243 kg

* DIFFERENT VOLTAGES THAN INDICATED AVAILABLE ON OPTION,
PLEASE CONTACT OUR SALES OFFICES